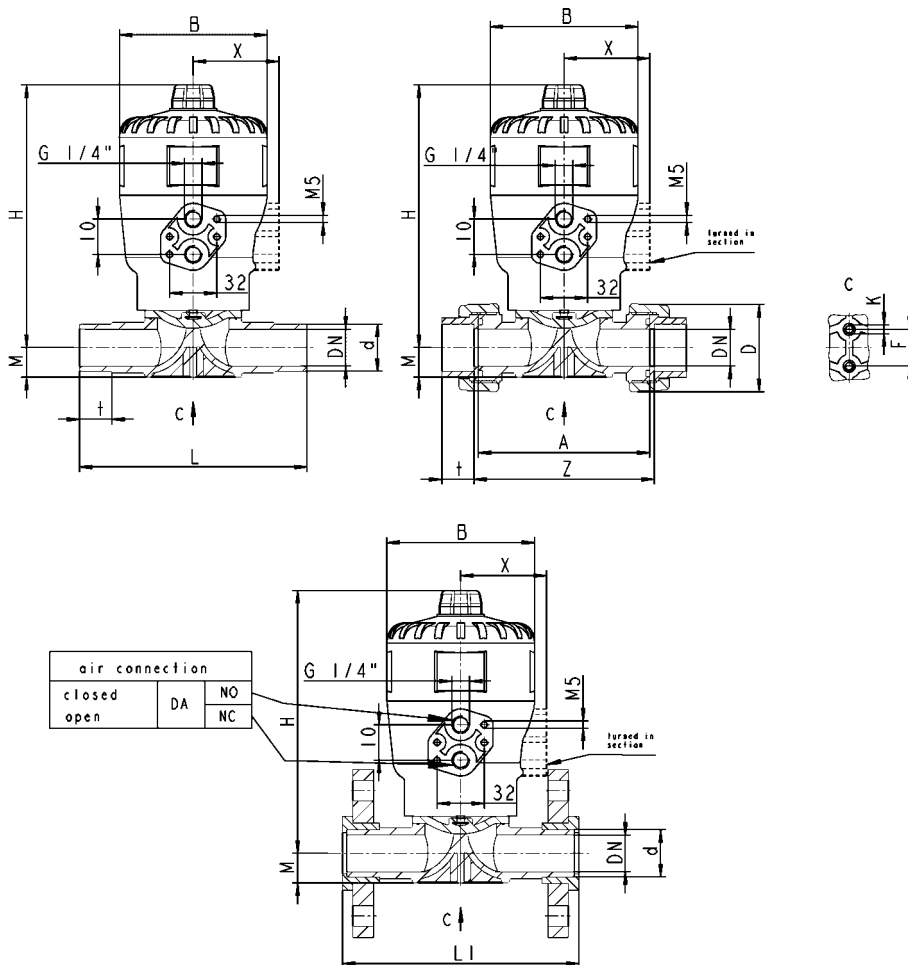


Diaphragm valve T4 PVC-U  
with pneumatic actuator and visual position  
Code 81



Technical data



**General:**

- Sealing material: EPDM, FPM or PTFE/EPDM
- Body material valve: PVC-U – PP – PVDF
- Dimensions: DN15/d20 – ½“ - DN50/d63 – 2“

**Operating pressure:** PN10

**Connections:**

- Solvent cement socket (DIN, ASTM, JIS)
- Solvent cement spigot (DIN)
- Flange (DIN, ASTM, ASA, JIS)

**Actuator material:** PA-GF

**Actuator inlet/outlet:** stainless steel

**Ambient temperature:** -10°C - +60°C

**Control fluid:** Neutral gases; air

**max. admissible control pressure:** look at table and diagram

**Mounting:** in every possible direction, preferable actuator above

**Control function:**

- NC: fail safe closed
- NO: fail safe open
- DA: double acting

**Benefits:**

- fast opening and closing
- for aggressive chemicals
- high flow rate
- optical position indication
- insert/outlet stainless steel
- NAMUR adaptor for solenoid valve

**Applications:**

- for contaminated and aggressive fluids
- Water treatment
- Process technology
- Chemical industry
- Environmental technology
- Systems engineering

**Accessories:**

- Electrical feedback
- 3/2 and 5/2 solenoid valves

d	mm	20	25	32	40	50	63
DN	mm	15	20	25	32	40	50
G	Zoll	½“	¾“	1“	1 ¼“	1 ½“	2“
A	mm	90,0	108,0	116,0	136,0	154,0	184,0
D	mm	43,0	53,0	60,0	74,0	83,0	103,0
F	mm	25,0	25,0	25,0	45,0	45,0	45,0
K	mm	M6	M6	M6	M8	M8	M8
L	mm	124,0	144,0	154,0	174,0	194,0	224,0
L1	mm	130,0	150,0	160,0	180,0	200,0	230,0
M	mm	17,0	17,0	21,0	33,0	33,0	40,5
t	mm	16,0	19,0	22,0	26,0	31,0	38,0
Z	mm	96,0	114,0	122,0	142,0	160,0	190,0
Actuator		K-52	K-62	K-82	K-122	K-122	K-123
B	mm	63,0	80,0	100,0	160,0	160,0	160,0
H	mm	126,5	151,5	265,5	278,0	278,0	282,5
X	mm	44,0	50,0	58,0	92,0	92,0	92,0
Actuator		K-62	K-82	-	-	-	-
B	mm	80,0	100,0	-	-	-	-
H	mm	148,0	174,0	-	-	-	-
X	mm	50,0	58,0	-	-	-	-

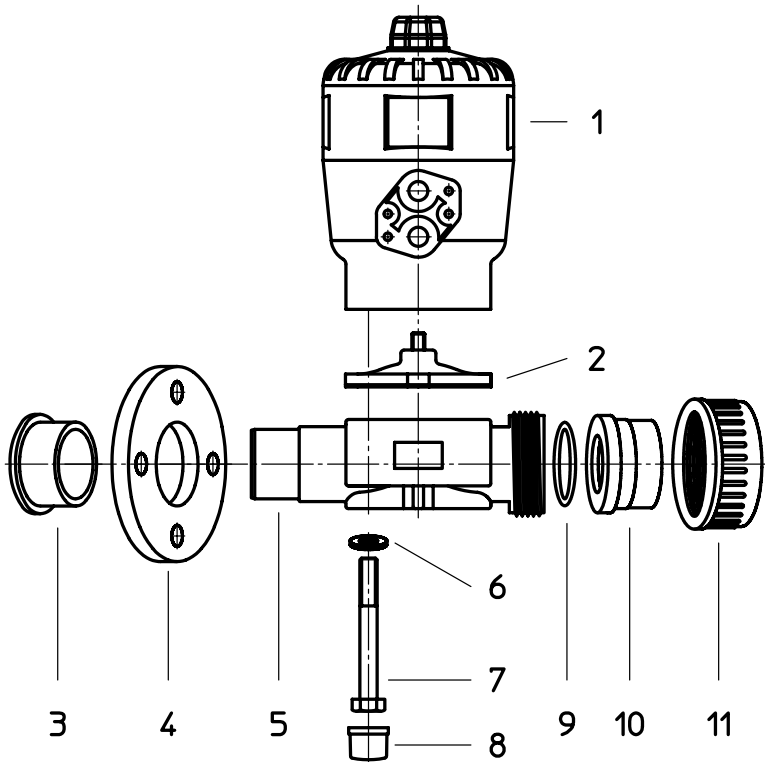
This print has the purpose of providing information but does not express any guarantees. This program is constantly expanding and therefore the herein shown models are in accordance with state of printing. Subjects to technical modification!

Diaphragm valve T4 *PVC-U*  
with pneumatic actuator and visual position  
Code 81



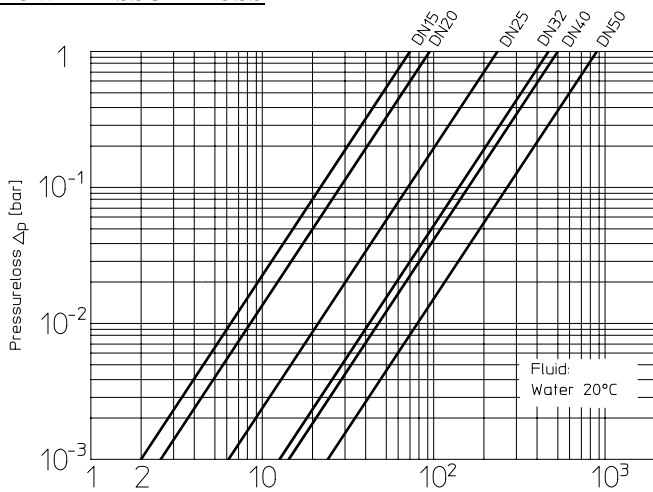
Technical data

EXPLODED DRAWING



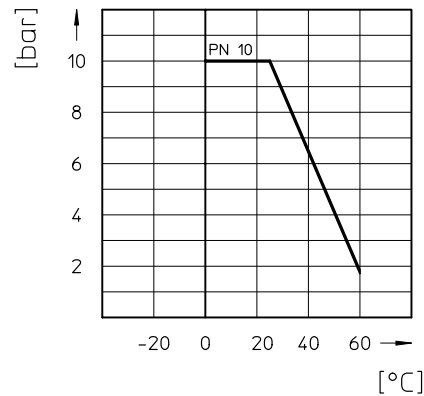
- 01. Pneumatic actuator
- 02. Diaphragm
- 03. Solvent cement socket
- 04. Flange
- 05. Bottom
- 06. Shim
- 07. Screw
- 08. Cover
- 09. O-Ring
- 10. Solvent cement socket
- 11. Union nut

FLOW-PRESSURELOSS



\*1 bar = 0,1 N/mm<sup>2</sup> ~ 1 kp/cm<sup>2</sup> ~ 14,5 psi

PRESSURE-TEMPERATURE-DIAGRAM



# Diaphragm valve T4 with pneumatic actuator and visual position *PVC-U*

Code 81



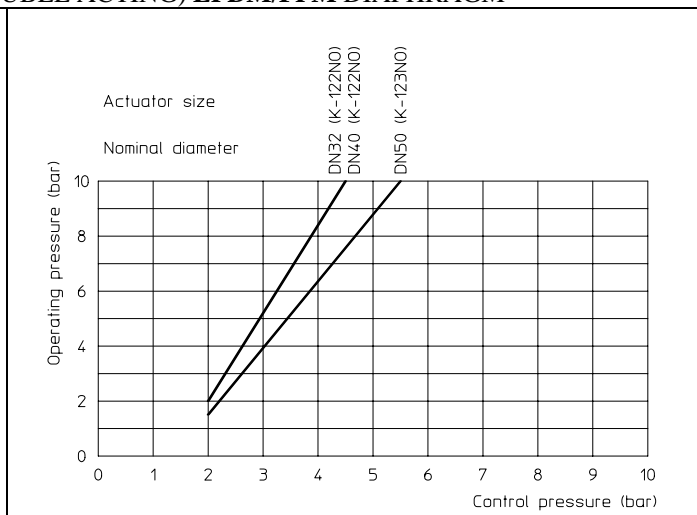
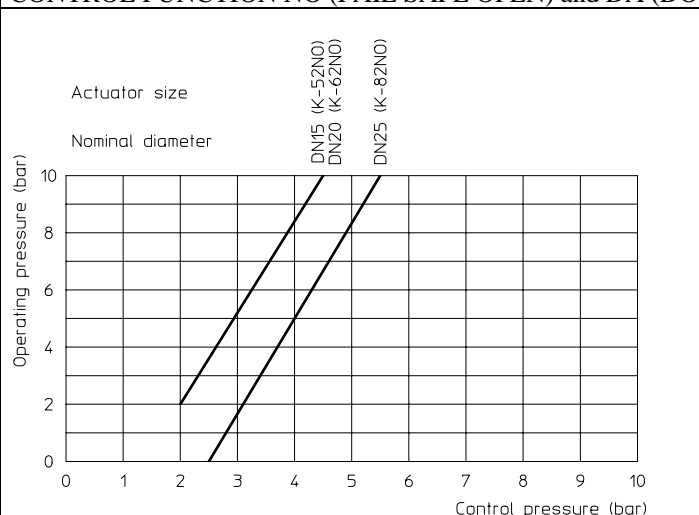
## Technical data

### OPERATING PRESSURE

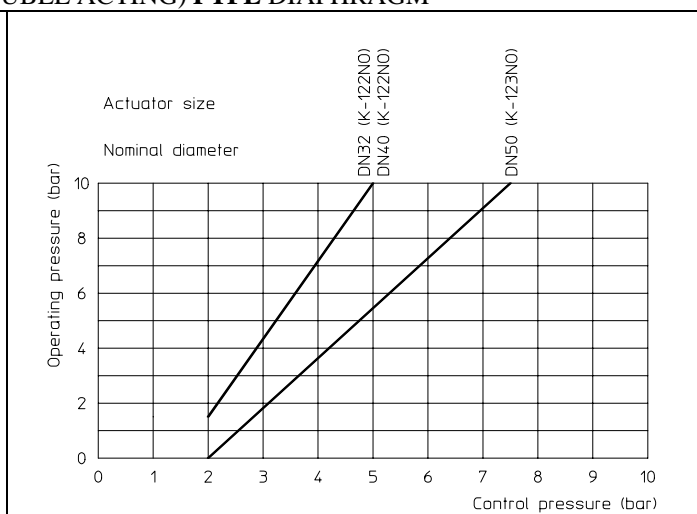
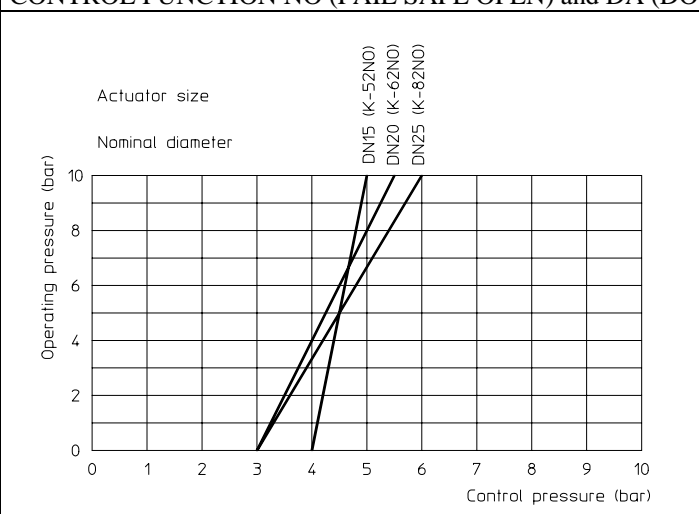
#### CONTROL FUNCTION NC (FAIL SAFE CLOSED)

DN/d	Actuator-size	Control pressure	max. operating pressure for diaphragm material	
			EPDM/FPM	PTFE/EPDM
mm		bar	bar	bar
15/20	K-52 NC	5,0-10	10	5
	K-62 NC	5,0-10	-	10
20/25	K-62 NC	5,5-10	10	5
	K-82 NC	5,0-10	-	10
25/32	K-82 NC	5,5-10	10	10
32/40	K-122 NC	5,5-10	10	10
40/50	K-122 NC	5,5-10	10	10
50/63	K-123 NC	5,5-10	10	10

#### CONTROL FUNCTION NO (FAIL SAFE OPEN) and DA (DOUBLE ACTING) EPDM/FPM DIAPHRAGM



#### CONTROL FUNCTION NO (FAIL SAFE OPEN) and DA (DOUBLE ACTING) PTFE DIAPHRAGM



NOTA: To protect the diaphragm do not choose the control pressure higher than it's necessary!

Diaphragm valve T4 PVC-U  
with pneumatic actuator and visual position  
Code 81



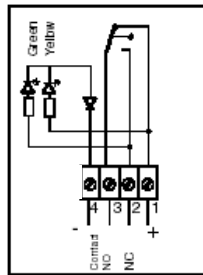
Technical data

ELECTRICAL POSITION FEEDBACK

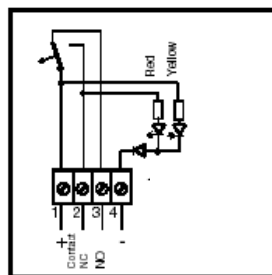


Connection mechanical limit switch

Open Position



Closed Position



The unused contact (NO or NC) is not potential free.

**Materials**

Body: Polyamide

Cover: Polycarbonate

**Ambient Temperature**

up to 60°C

**LED display**

green: valve open

red: valve closed

yellow: valve voltage „on“

**Protection**

IP65

**Electrical protection**

external: PG11 cable gland

Mechanical limit switch

AC contact version

**Power supply**

- 12-24V AC/DC

- 110-250V AC

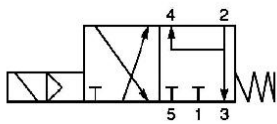
Type 701515: K52, K62 and K82

Type 701516: K122 and K123

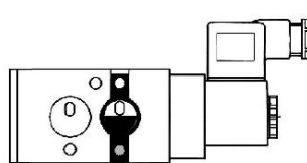
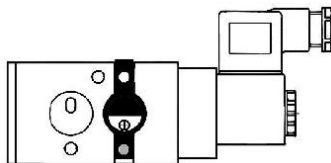
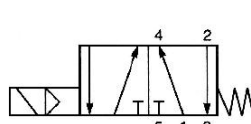
SOLENOID VALVE NAMUR



3/2 FUNKTION



5/2 FUNKTION



**General Features**

- Solenoid valve Namur with combined 5/2 and 3/2 ways funktion + standard coil
- Easy change over from 5/2- to 3/2-ways operation by innovative sealing-plate to be turn around
- Manual override as standard

**Material**

- Body: Aluminium, anodised
- Piston: Aluminium
- Seals: NBR
- Screws and spring: stainless steel

**Voltage:**

- 24 V DC (3W)
- 230 V AC (5VA)